



Oversight and Governance

Chief Executive's Department
Plymouth City Council
Ballard House
Plymouth PL1 3BJ

Please ask for Jake Metcalfe, Democratic
Advisor

T 01752 305155

E

www.plymouth.gov.uk

Published 14 June 2022

EDUCATION AND CHILDREN'S SOCIAL CARE OVERVIEW AND SCRUTINY COMMITTEE

Wednesday 15 June 2022

1.30 pm

Warspite Room, Council House

Members:

Councillor Laing, Chair

Councillor Mrs Pengelly, Vice Chair

Councillors Allen, Briars-Delve, Dr Cree, Cresswell, Deacon, Harrison, Hulme, Loveridge,
Partridge, Poyser and one Conservative Vacancy.

Members are invited to attend the above meeting to consider the items of business overleaf.

This meeting will be webcast and available on-line after the meeting. By entering the room, councillors are consenting to being filmed during the meeting and to the use of the recording for the webcast.

The Council is a data controller under the Data Protection Act. Data collected during this webcast will be retained in accordance with authority's published policy.

For further information on attending Council meetings and how to engage in the democratic process please follow this link - [Get Involved](#)

Tracey Lee

Chief Executive

Education and Children's Social Care Overview and Scrutiny Committee

1. To note the appointments of the Chair and Vice-Chair for the Municipal Year 2022 - 2023

For the Committee to note the appointment of Councillor Laing as Chair, and Councillor Mrs Pengelly as Vice Chair, for the municipal year 2022 – 2023.

2. Apologies

To receive apologies for non-attendance submitted by Councillors.

3. Declarations of Interest

Councillors will be asked to make any declarations of interest in respect to items on the agenda.

4. Minutes (Pages 1 - 6)

To confirm the draft minutes of the previous meeting held on 16 February 2022.

5. Chair's Urgent Business

To receive reports on business which in the opinion of the Chair, should be brought forward for urgent consideration.

6. Education and Children's Social Care OSC Terms of Reference: (Pages 7 - 8)

7. Education and Children's Social Care Policy Brief: (Pages 9 - 18)

8. Overview of Children's Social Care & Education, Participation and Skills Service: (Pages 19 - 36)

9. Children's Services Provisional Financial Outturn Report 2021/22: (Pages 37 - 40)

10. Children's Services Scrutiny Performance Report (Q4 2021-22): (Pages 41 - 50)

11. Kickstart Update: (Pages 51 - 54)

12. City Wide Youth Service Provision: (Pages 55 - 64)

13. Work Programme: (Pages 65 - 66)

Education and Children's Social Care Overview and Scrutiny Committee

Wednesday 16 February 2022

PRESENT:

Councillor Laing, in the Chair.

Councillor James, Vice Chair.

Councillors Allen, Mrs Aspinall, Bingley, Cresswell, Goslin, Loveridge and Partridge.

Also in attendance: Councillor Vivien Pengelly (Cabinet Member for Homes and Communities), Alison Botham (Director of Childrens Services), Jean Kelly (Service Director for Children, Young People and Families), Ming Zhang (Service Director for Education, Participation & Skills), Jane Anstis (Head of Service for Children, Young People and Families), Paul Stephens (Performance Advisor), Caroline Marr (Senior Policy Advisor) & Jake Metcalfe (Democratic Support Advisor).

The meeting started at 13:30 and finished at 16:18.

Note: At a future meeting, the Panel will consider the accuracy of these draft minutes, so they may be subject to change. Please check the minutes of that meeting to confirm whether these minutes have been amended.

76. **Declarations of Interest**

There were no declarations of interest.

77. **Minutes**

The minutes of 17 November 2021 were agreed as a true and accurate record.

78. **Chair's Urgent Business**

Councillor Laing presented a letter to the Committee that had been sent to Baroness Baron on the Trailblazers Education Pilot and the announcement of the Education Improvement Area's. Plymouth had been one of four, but this had increased to one in 55 Local Authority areas. Any response to the letter to Baroness Baron, would be included in any future Scrutiny.

79. **ECSC Policy Brief**

Caroline Marr, Senior Policy Advisor presented this item to the Committee and highlighted the following key points:

- a) A consultation had been launched with changes to the school admissions appeals code with a proposal to hold those appeals remotely either via telephone or video conference to make this easier for people to attend;

- b) Funding would be made available through the 'England for Everyone' fund and would support families that had been struggling financially, suffered bereavement or isolated and to give them a weekend break;

Members discussed:

- a) The need for Public Health to provide parents with information in September in relation to Measles vaccines in readiness for the new school term. This would be fed into the Health and Adult Social Care overview and Scrutiny Committee;
- b) Plymouth had been selected as one of the Education Investment Area's, the Committee would like to review this in the next municipal year;

Recommendation: For Scrutiny Management Board to investigate a mechanism for the relevant scrutiny to feed into Plymouth City Council's responses to consultations.

80. **General Update on Home to School Transport**

Councillor Mrs Pengelly, Cabinet Member for Homes and Communities introduced this item to the Committee. Ming Zhang provided the Committee with an update and highlighted the following key points:

- a) The service had been delivered by Plymouth City Council's Home to School Transport Team and provided a statutory service to the most vulnerable children in the city;
- b) The service had been impacted by the COVID-19 pandemic, the national driver shortage and the increase in operating costs which had equated to 10-20%. Costs had also increased due to the decrease in drivers operating for taxi companies;
- c) There had been a change in the statutory guidance in that the SEND cohort ages had increased to 25, this increase did not come with extra funding for the post-16 cohort;

Members discussed:

- a) Due to the increase in demand for the service and the decrease in supply, the school transport service had been running at capacity. The service had been looking at ways to increase efficiencies or combine routes covered in order to find savings where possible. Despite the challenges no vulnerable child in Plymouth had been left without;
- b) There had been a COVID grant of £400,000, however Ming Zhang advised the Committee that he had been confident that the service would still be able to operate within the budget set, although this would present challenges;

- c) The importance of maintaining a good home to school transport service for the benefit of the vulnerable children it had served. It was noted that Plymouth City Council had been exploring alternative ways to promote jobs in the taxi industry and had been targeting those that had been unemployed. Drivers had changed their roles to delivery roles due to an increase in wages;

Recommendation: Within future financial monitoring reports, additional reporting would be required for the Home to School Transport Service

The Committee noted the report.

81. **Child Exploitation Update and Child Evidence**

Councillor Mrs Pengelly, Cabinet Member for Homes and Communities introduced this item to the Committee. Jane Anstis, Head of Service for Children, Young People and Families service highlighted the following key points:

- a) The Adolescent Safety Framework had been used as the framework delivered by partners and agencies across the city to tackle Child Exploitation facing all children since the beginning of January 2022. The Adolescent Safety Hub has been based within the Multi-Agency Safeguarding Hub and had been receiving contextualised safeguarding concerns and where there had been significant risks for individual children, there would be a same day response and work with partners to make sense of the context of risk. The Adolescent Safety Hub would then feed into the Operational Multi-Agency Child Exploitation Group which had met once every two weeks to ensure there would be a co-ordinated response to particular areas of concern from key partners. The Operational Group would then feed into the Strategic Multi-Agency Child Exploitation group to ensure that there would be a co-ordinated response for the city;
- b) The Reducing Exploitation and Absence from Care and Home team (REACH) had been a team of Professional Youth Workers who worked with young people who had been reported missing and would undertake Return Home Interviews (RHI's) with the young person and direct work with those children/young people who may have been at risk;
- c) Between April 2021 and February 2022, there had been 657 missing episodes reported with those attributable to 388 young people, 276 of whom were young people open to the Children, Young People and Families service. 135 were Looked after Children, 21 on a Child Protection Plan and 120 had been on a Child in Need plan.

Members discussed:

- a) The Chair of the Strategic MACE had been the Regional Director for

Barnardo's Nick Cook and there had been a review of those Strategic arrangements;

- b) The Plymouth Safeguarding Partnership had been providing training and awareness sessions across the City. Plymouth City Council had also provided bespoke training sessions to partners across the city. The Adolescent Safety Hub had been actively engaged with partners and agencies to model and support confidence in using the framework as part of their role;
- c) Online exploitation had been covered within the Adolescent Safety Framework and this would be made more explicit in the Framework;
- d) The Children's Safeguarding Partnership had the responsibility to ensure that all partners had been effective with the right training available to all agencies in the city. The service had been in the process of recruiting.

Recommendation: Further sessions to be extended to all councillors to ensure knowledge and confidence in understanding the Framework which would be used across the city. All Councillors would be provided with sufficient information on the Adolescent Safety Framework.

82. **Children's Performance Report**

Councillor Mrs Pengelly, Cabinet Member for Homes and Communities introduced this item to the Committee. Jean Kelly, Service Director for Children's Social Care and Ming Zhang, Service Director for Education, Participation and Skills presented the data within the report.

Members discussed:

- a) The figure for children attending schools had been affected by COVID, however the Government would look to bring this back to normality in a phased approach with attendance figures of 90% and then look to be fully back to normal after this;
- b) The number of children and young people on a Child Protection plan from the end of 2021 had been 332, this had risen to 338 in February 2022. Changes to the category of which a Child or young person goes onto, or remains on a Child Protection plan, would be decided within Child Protection conferences and could change to a different category based on what the concerns at the time had been;
- c) Plymouth City Council Children and Young People's Families service had been feeding into the Violence against Women and Girls Commission and had been sharing data, range of interventions provided and the training on offer to staff. The Targeted Support Service had met with the Commission to discuss the range of interventions that had been offered;

- d) For the Performance report to include further data over a longer period of time so members of the Committee could evaluate trends. For the Performance report to also include data on Multi-Academy Trusts (MATs) and their OFSTED ratings;
- e) The School Improvement Service had been putting in support to schools across Plymouth, no matter whether there came under the umbrella of a Multi-Academy Trust (MAT) or not. The Government would cut the School Improvement Grant by 50% and then by 100% next year. The Government would be implementing this as they would like schools to have more autonomy with regards to school improvement;

The Committee noted the report.

83. **Early Years Strategy Board**

Councillor Mrs Pengelly, Cabinet Member for Homes and Communities introduced this item to the Committee. Ming Zhang, Service Director for Education, Participation and Skills presented the report to the committee and members discussed:

- a) Uptake of free pupil premium for early years for Plymouth continued to be above the national average and work would continue to encourage an increased uptake in Pupil Premium;
- b) Plymouth City Council's Early Years setting staff continued to support and work hard to provide training and link up with the Department for Education's resources to ensure high quality staff would be recruited and maintained;
- c) Although Plymouth City Council had been above the national average for uptake in Early years settings, it had been encouraged that the Council needed to continue to strive to increase this uptake further;

The Committee agreed to:

1. Endorse the three strands of work for Early Years as agreed by the Early Years Strategy Board as set out in this report
2. Endorse the 2022/23 priorities for the Board as set out in this report

It had been agreed for this item to return to Scrutiny once outcome data had become available.

84. Fostering Sufficiency and Marketing

Councillor Mrs Pengelly, Cabinet Member for Homes and Communities introduced this item to the Committee. Jean Kelly, Service Director and Jane Anstis, Head of Service for the Children, Young People and Families service presented the report to the Committee and Members discussed:

- a) Children in care had access to leisure facilities within the city at no extra cost to themselves and the service had been trying to expand the offer. The foster care offer had been worked on to compete with independent sector foster care agencies and out of this work it had been recognised that foster carers valued the level of support on offer to them;
- b) There had been a reduction in enquiries being made to the service to become a foster carer. The Council's website had been updated regularly and efforts had been made to ensure the Plymouth offer had been visible and transparent to the city of Plymouth;
- c) Foster for Plymouth to make enquiries to include information in the Council Tax billing for the City, this would ensure every household in Plymouth have information;

The Committee noted the report.

85. Draft Work Programme 2022-2023

The Committee agreed to include the following for the next Overview and Scrutiny Committee:

- Update on Kickstart programme
- Plymouth Safeguarding Partnership
- Update on the Youth Service
- Update on Elective Home Education

Education and Children's Social Care Overview and Scrutiny Committee

I.1. Responsibility for-

- Relevant policies in the Plymouth Plan
- Early Years Services
- Schools, colleges and other educational settings
- Child Poverty
- Special Education Needs, behaviour and attendance, narrowing the gap in outcomes
- Safeguarding Children
- Cared for children
- Youth offending
- Adoption and Fostering
- Corporate Parenting
- Hear call-ins relevant to the role of the committee

I.2. Partnership Links

- Plymouth Safeguarding Children's Board
- Plymouth Education Board
- Health and Wellbeing Board
- Regional Adoption Agency
- Children's Partnership

I.3. Membership - All members of the Committee will adhere to the general rules of Overview and Scrutiny. There are thirteen members of the Committee including the Chair and Vice Chair.

I.4. Chair – The Chair will be from the largest opposition group and will be a member of the Scrutiny Management Board.

I.5. Vice Chair – The Vice Chair will be from the group in administration and will act as substitute for the Chair on the Scrutiny Management Board.

I.6. Urgent Decisions – Urgent decisions will be reviewed by the Chair with relevant responsibilities

This page is intentionally left blank

Education and Children's Social Care Overview and Scrutiny Committee



Date of meeting:	15 June 2022
Title of Report:	ECSC Policy Brief
Lead Member:	Councillor Charlotte Carlyle
Lead Strategic Director:	Alison Botham (Director for Childrens Services)
Author:	Caroline Marr (Senior Policy Advisor)
Contact Email:	Caroline.marr@plymouth.gov.uk
Your Reference:	ECSC PB 150222
Key Decision:	No
Confidentiality:	Part I - Official

Purpose of Report

To provide Education and Children's Social Care Overview and Scrutiny Committee with the latest national picture in respect of policy announcements and legislation affecting children and young people.

Recommendations and Reasons

For Scrutiny to consider the information provided in regard to their role and future agenda items.

Alternative options considered and rejected

N/A

Relevance to the Corporate Plan and/or the Plymouth Plan

Delivery of the Corporate Plan and Plymouth Plan needs to take account of emerging policy and the legislative picture.

Implications for the Medium Term Financial Plan and Resource Implications:

N/A

Financial Risks

N/A

Carbon Footprint (Environmental) Implications:

N/A

Other Implications: e.g. Health and Safety, Risk Management, Child Poverty:

** When considering these proposals members have a responsibility to ensure they give due regard to the Council's duty to promote equality of opportunity, eliminate unlawful discrimination and promote good relations between people who share protected characteristics under the Equalities Act and those who do not.*

N/A

Appendices

*Add rows as required to box below

Ref.	Title of Appendix	Exemption Paragraph Number (if applicable) <i>If some/all of the information is confidential, you must indicate why it is not for publication by virtue of Part 1 of Schedule 12A of the Local Government Act 1972 by ticking the relevant box.</i>						
		1	2	3	4	5	6	7
A	ECSC Policy Brief – 15 June 2022							
B								

Background papers:

*Add rows as required to box below

Please list all unpublished, background papers relevant to the decision in the table below. Background papers are unpublished works, relied on to a material extent in preparing the report, which disclose facts or matters on which the report or an important part of the work is based.

Title of any background paper(s)	Exemption Paragraph Number (if applicable) <i>If some/all of the information is confidential, you must indicate why it is not for publication by virtue of Part 1 of Schedule 12A of the Local Government Act 1972 by ticking the relevant box.</i>						
	1	2	3	4	5	6	7

Sign off:

Fin	N/A	Leg	N/A	Mon Off	N/A	HR	N/A	Asset s	N/A	Strat Proc	N/A
Approved by: Giles Perritt, Assistance Chief Executive											
Date approved: Monday 06 June 2022											

POLICY BRIEF

Education and Children's Social Care Overview and Scrutiny

15 June 2022



The information within this Brief is correct at the time of approval for publication and contains relevant policy announcements made by Government and its departments and regulators.

Consultations and Calls for Evidence

[SEND review: right support, right place, right time](#)

Open consultation

The government is committed to improving outcomes for children and young people with SEND and those in alternative provision. They have published proposals set out in a green paper. A separate summary covering the [SEND and AP green paper and responding to the consultation](#) is also available.

The consultation closes at 11:45pm on 22 July 2022.

The Council will be responding to this consultation as part of a collective local response from the SEND strategic group. The general direction is welcomed as it aligns well with the activity set out in the Inclusion Transformation Programme already underway.

[School attendance: improving consistency of support](#)

Consultation response

The Department for Education launched a consultation on proposals to improve the consistency of school attendance. They were seeking views on the following measures:

- Requiring schools to have an attendance policy
- Guidance on the expectations of LA attendance services
- A clearer more consistent national framework for the use of attendance legal intervention, including a new regulatory framework for issuing fixed penalty notices for absence
- Bringing the rules for granting leaves of absence in academies in line with other state funded schools

It is DfE's view that these proposals will in fact improve the individual and collective support available to such pupils to help overcome the barriers they face to attendance earlier. This includes expectations in guidance for better use of attendance data to spot issues earlier and target interventions, more joined up working between schools, parents and local services, and increased sharing of effective practice. Specific concerns raised in this consultation have also been reflected in the development of the new guidance and will continue to be used as the DfE develop the measures further.

The Department for Education has conducted a new burdens assessment with local authorities, the Association of Directors of Children's Services, the Local Government Association and the Department for Levelling Up, Housing and Communities which shows the proposal does not constitute a new burden and can be delivered within existing budgets.

Plymouth City Council responded to this consultation. The Council also took part in the Children's Commissioner's attendance survey and the DfE attendance project.

[Revised behaviour in schools guidance and suspension and permanent exclusions guidance](#)

Awaiting consultation outcome

In response to the [Timpson review of school exclusions](#), the government committed to working with sector experts to publish clearer, more consistent guidance. The aim of this guidance is to support schools to:

- create positive behaviour cultures
- ensure suspensions and permanent exclusions are conducted in a lawful, reasonable and procedurally fair way

[New Ofqual guidance on making assessments accessible for students](#)

Consultation outcome

New guidance has been published (12 May 2022) in response to a **12-week consultation**, in which there was strong support from respondents, students and their representatives, including those with special educational needs and disabilities (SEND). The guidance supports awarding organisations to design assessments to meet rules on accessibility. The guidance explains that, in their exams and assessments, awarding organisations should:

- use accessible and appropriate language
- use clear and consistent layout
- use source material, context, images and colour in ways that do not disadvantage students
- consider how Reasonable Adjustments could be made to the exam or assessment to make sure disabled students are not disadvantaged

Date of announcement /publication	Education and Children's Social Care Overview and Scrutiny Committee
Government Policy / Legislative Announcements:	
02 April 2022	<p>Package of support for vulnerable families announced which will help every child get the best possible start in life.</p> <p>This forms part of the wide-ranging support across the government's flagship family programmes for those who need extra help to fulfil their potential, levelling up opportunities for children across the country. To support parents, 75 local authorities were announced as eligible for a share of £302 million to create new Family Hubs in their areas. These hubs aim to give parents advice on how to take care of their child and make sure they are safe and healthy – providing services including parenting and breastfeeding support.</p> <p><i>Plymouth was announced as one of the 75 eligible local authorities, and we await more details of the programme plan and confirmation of the amount of funding.</i></p> <p><i>We know that the programme will include funding specifically to develop Family Hubs, to publish a local Start for Life offer, delivery of parenting programmes and infant/parental mental health support, as well as cash for breastfeeding initiatives.</i></p> <p><i>The eligible local authorities will need to commit to delivery of the programme in order to be able to access the funding, and the Council is working as part of the newly formed Early Help Partnership to make sure we are in a position to proceed at pace once the detail of the programme is confirmed.</i></p>

	<p><i>The Early Help Partnership was formed in December 2021 following a procurement to put in place a 10 year partnership to drive the development of Family Hubs in Plymouth. The partners include Livewell Southwest, Action for Children, Lark Children’s Centres, Harbour and Hamoaze.</i></p>
12 April 2022	<p><u>Families supported by £33 million to drive down parental conflict</u></p> <p>The government has announced £33 million to support families with children to resolve conflict at home and improve children’s life chances. The funding comes as the programme’s <u>third evaluation report</u> is published. It details the positive effect of the support on family relationships and improvements in their children’s behaviour.</p> <p><i>In 2018 the government launched the Reducing Parental Conflict Programme (RPC). The next phase of the RPC Programme will run from April 2022 to March 2025. It continues to support local areas to embed help for parents experiencing conflict and improving local capability to identify these parents.</i></p> <p><i>Plymouth were successful in receiving grant funding to continue to develop its RCP programme for the next 2 years. This grant will be used to continue to fund the Restoring Relationships Co-ordinator to undertake the following work:</i></p> <ul style="list-style-type: none"> • <i>Establish a social media account that will be used to provide advice and guidance and will be updated daily to ensure any queries are responded to in a timely way.</i> • <i>Promote the Restoring Relationships / RPC programme across the city and provide training to those agencies working with children and families.</i> • <i>Create a bespoke local programme that is focused on local need.</i> • <i>Develop and deliver the parents programme and manage all referrals.</i> • <i>Create individual workshops on RPC themes</i> • <i>Deliver workshops in Early Help settings i.e. Children Centres</i> • <i>Create a group programme / series of workshops to deliver to young people</i> • <i>Engage schools on the healthy relationships programme</i> <p><i>The aim is to upskill and build confidence across the workforce to be able to identify and support those families where parental conflict impacts on their lives - embedding the programme into all areas of the early help system will ensure that children and families can access this support from a trusted professional at the time they need it.</i></p>
02 May 2022	<p><u>Education Secretary urges remaining schools to participate in National Tutoring Programme</u></p> <p>New data to be published this autumn showing individual schools' involvement in the National Tutoring Programme. The data will also be shared with Ofsted, with the department working with Ofsted over the coming months on the best use of that data. Schools yet to offer tuition through the programme will be contacted individually from this week to discuss their plans and offer support.</p>

	<p><i>For children who are eligible for Pupil Premium, Plymouth schools have made use of the 1:1 tuition programme, and put in place quality intervention strategies to address small group and individual needs. Many schools have used research-based methods with outcomes regularly monitored.</i></p> <p><i>Where schools have found that the use of the Government funded tutor scheme has failed to show impact, several have employed experienced teachers locally to provide focused intervention/catch up teaching for pivotal groups exhibiting greatest gaps in progress. All schools have used teacher assessment to identify gaps and focused core intervention in reading, writing and maths.</i></p> <p><i>A survey was carried out in May 2022 to gauge the current use of NTP, feedback pending.</i></p>
13 May 2022	<p><i>Teacher bonuses and funding for schools to level up education</i></p> <p>STEM teachers in disadvantaged schools to receive £3,000 tax-free payments per year over next three years along with new funding to improve school buildings. The Levelling Up Premium is intended to improve pupil outcomes across the country by helping to retain specialist teachers working in disadvantaged areas.</p> <p><i>Plymouth is one of the 55 Education Investment Areas which means the city can attract additional funding and support.</i></p> <p><i>20 Plymouth schools are eligible for the Levelling Up premium (7 maintained schools and 13 academies). However, it is uncertain how much funding Plymouth will attract over the next three academic years as this will depend on the number of eligible STEM teachers within these schools who make a claim. STEM teachers must be classed as early career teachers to claim the levelling up premium, but cannot claim this premium alongside any existing early-careers payment.</i></p>
23 May 2022	<p>The <i>Independent Review of Children’s Social Care</i> final report has been published. The report found that the current system is increasingly skewed to crisis intervention, with outcomes for children that continue to be unacceptably poor, and costs that continue to rise. Over 60 recommendations have been made in the review that would, if implemented, result in a dramatic whole system reset.</p> <p>Government is setting out initial measures in <i>response</i> to the recommendations in the report. As part of this, the government has revealed plans to set up a new National Implementation Board of sector experts and people with experience of leading transformational change and the care system. It will also boost efforts to recruit more foster carers, increase support for social workers including on leadership, recruitment and retention, improve data sharing, and implement a new evidence-based framework for all the professionals working in children’s social care.</p> <p><i>An ‘in service’ review will be carried out over the coming months around the recommendations of this report with the intention of aligning current policy and practice where possible, and to understand the scale and impact of some of the recommendations so that the council is in a better</i></p>

	<i>position to respond when government announces further proposals to address the recommendations.</i>
26 May 2022	<p>National Child Safeguarding Practice Review National review into the murders of Arthur Labinjo-Hughes and Star Hobson. The review sets out recommendations and findings for national government and local safeguarding partners to protect children at risk of serious harm. It examines the circumstances leading up to the deaths of Arthur Labinjo-Hughes and Star Hobson and considers whether their murders reflect wider national issues in child protection.</p> <p>The review has made eight national recommendations, in summary;</p> <ol style="list-style-type: none"> 1. A new expert-led, multi-agency model for child protection investigation, planning, intervention, and review. 2. Establishing National Multi-Agency Practice Standards for Child Protection. 3. Strengthening the local Safeguarding Partners to ensure proper co-ordination and involvement of all agencies. 4. Changes to multi-agency inspection to better understand local performance and drive improvement. 5. A new role for the Child Safeguarding Practice Review Panel in driving practice improvement in Safeguarding Partners. 6. A sharper performance focus and better co-ordination of child protection policy in central Government. 7. Using the potential of data to help professionals protect children. 8. Specific practice improvements in relation to domestic abuse. <p><i>These recommendations will be reviewed within the Children’s Social Care Service, alongside those from the Independent Review of Children’s Social Care (above) as a holistic piece of work.</i></p>
25 May 2022	<p>Next steps towards a stronger school system with all schools in strong trusts The Schools Bill, announced in the Queen’s Speech, will pave the way for all schools to join a strong multi-academy trust. It provides the framework for a new, legally enforceable set of standards for academy trusts, replacing disparate standards agreed with each trust at the point it was created - so that parents will know what they can expect for their children. It introduces a new legal tool for local authorities to request some or all of their schools join a strong academy trust, in addition to the existing powers that individual school governing boards hold.</p> <p>Detailed plans for moving all schools into strong academy trusts have now been published, kickstarting work towards the goal set out in the Schools White Paper for every school to be in, or in the process of joining, a trust by 2030.</p> <p>The Department has also published details of how local authorities can apply to establish a multi-academy trust.</p> <p><i>The Council is currently working with schools and the DfE Regional Director’s Office to explore ways forward for Plymouth schools.</i></p>
27 May 2022	<p>Phase I of the Youth Investment Fund: successful grantees Phase I of the The Youth Investment Fund, delivered by BBC Children In Need, has granted up to £12 million to 418 youth organisations across England.</p>

	<p>Plymouth has secured just under £64k for three projects: Creative Curiosities, Barnardo's and the Mount Batten Centre. This Phase 1 was a standalone funding round for small VCSE capital projects that had to be defrayed by 31 March 2022.</p> <p>Phase 2 will be a scheme for local authorities, which is due to launch in July 2022. The council will be preparing a bid for funding, ensuring there is read across to the developing Family Hubs programme, to develop existing and new multi-functional youth spaces which aim to offer a range of support for young people across the city.</p>																									
	<p>Education recovery funding doubles for secondary schools</p> <p>Funding for the Government's education recovery programme is to double for secondary schools next year, supporting pupils to catch up on lost learning.</p> <p>The table below shows the Recovery Premium rates for 2022/23 compared to 2021/22;</p> <table border="1" data-bbox="411 779 1452 1182"> <thead> <tr> <th></th> <th>Per Pupil rate 2021/22 AY (£)</th> <th>Per Pupil rate 2022/23 AY (£)</th> <th>Per Pupil Increase/ (decrease) (£)</th> <th>Per Pupil increase / (decrease) (%)</th> </tr> </thead> <tbody> <tr> <td>Mainstream Primary</td> <td>145</td> <td>145</td> <td>-</td> <td>-</td> </tr> <tr> <td>Mainstream Secondary</td> <td>145</td> <td>290</td> <td>145</td> <td>100%</td> </tr> <tr> <td>Other eligible Primary settings; special schools, PRU, AP, SEND units in mainstream schools</td> <td>290</td> <td>276</td> <td>(14)</td> <td>(4.8%)</td> </tr> <tr> <td>Other eligible Secondary settings; special schools, PRU, AP, SEND units in mainstream schools</td> <td>290</td> <td>552</td> <td>262</td> <td>90.3%</td> </tr> </tbody> </table> <ul style="list-style-type: none"> • The funding rate for mainstream secondary schools has increased by £145 per pupil (100%), whilst there has been no uplift to the per pupil rate for primary schools. • The funding rate for other eligible Secondary settings has increased by £262 per pupil (90.3%), whilst the funding rate for other eligible Primary settings has reduced by £14 per pupil (4.8%). <p>The total funding increase/decrease per school will be determined once Central Government has published the school-level allocations for 2022/23.</p>		Per Pupil rate 2021/22 AY (£)	Per Pupil rate 2022/23 AY (£)	Per Pupil Increase/ (decrease) (£)	Per Pupil increase / (decrease) (%)	Mainstream Primary	145	145	-	-	Mainstream Secondary	145	290	145	100%	Other eligible Primary settings; special schools, PRU, AP, SEND units in mainstream schools	290	276	(14)	(4.8%)	Other eligible Secondary settings; special schools, PRU, AP, SEND units in mainstream schools	290	552	262	90.3%
	Per Pupil rate 2021/22 AY (£)	Per Pupil rate 2022/23 AY (£)	Per Pupil Increase/ (decrease) (£)	Per Pupil increase / (decrease) (%)																						
Mainstream Primary	145	145	-	-																						
Mainstream Secondary	145	290	145	100%																						
Other eligible Primary settings; special schools, PRU, AP, SEND units in mainstream schools	290	276	(14)	(4.8%)																						
Other eligible Secondary settings; special schools, PRU, AP, SEND units in mainstream schools	290	552	262	90.3%																						
Ofsted Announcements:																										
26 May 2022	<p>Ofsted's strategy 2022 to 2027</p> <p>HM Chief Inspector Amanda Spielman introduces Ofsted's new 5-year strategy, setting the direction until 2027. Amanda Spielman said "both education and social care are under great pressure, grappling with the effects of the pandemic, lockdowns and restrictions on children and young people: their education, their social development, their physical and mental health, and their welfare. Ofsted's role has never been more important, and we will continue to play our part in this recovery phase, working as always for children to raise standards and improve lives.</p>																									

	Over the next 5 years we will continue to use data and intelligence, often augmented by further research, to make the case for change and improvement. We will use it to inform and equip policymakers; we hope providers will use it to inform their work; and, of course, we will use it to evaluate our own policies and practices.”
For information:	
28 April 2022	<p>Skills and Post-16 Education Act</p> <p>New laws have been passed through the Skills and Post-16 Education Act that will help transform the skills and training landscape, and level up opportunities across the country. Skills that support the green economy will be prioritised, to create a workforce for jobs available now and in the future. Schools will be required to make sure all children have the opportunity to access technical education routes such as apprenticeships, T Levels or traineeships.</p>
04 May 2022	<p>Letter to councils and schools about supporting Ukrainian children to integrate into English schools</p> <p>The Secretary of State for Education, Rt Hon Nadhim Zahawi MP, has written to councils and schools about supporting Ukrainian children to integrate into English schools. This signposts to additional Ukrainian learning materials, which can be used to complement, not supplement, their mainstream English education.</p> <p><i>As of May 2022, nine pupils have been allocated places in schools, with support packages in place. The nine pupils have settled into school well and are making good, early progress. It is worth noting that children from Ukraine have not suffered the prolonged displacement and trauma evident amongst the Syrian children we welcomed into our schools, and they have previously attended schools similar to our own, and most are able to speak some English. Visas initially awarded to Ukrainian refugees are for three years, however, as we know it may not be possible for all families to return, it is essential that children learn well in English, in order to reach age related expectations as quickly as possible.</i></p>
25 May 2022	<p>Skills boost for local communities</p> <p>Under the scheme, announced by Higher and Further Education Minister Michelle Donelan, The Open University will work with colleges that do not currently offer higher technical education, or want to expand the range of courses they offer.</p>

This page is intentionally left blank

Children's Services Overview



Alison Botham
Director of Children's Services

Ming Zhang
Service Director
Education Participation and Skills

Jean Kelly
Service Director
Children, Young People and Families Service

Children's Services Briefing

May 2022



- Statutory Guidance on the roles and responsibilities of the Director of Children's Services (DCS) and the Lead Member for Children's Services sets out the responsibilities of the DCS as follows
 - To secure the provision of services which address the needs of all children and young people, including the most disadvantaged and vulnerable, and their families and carers.
 - The DCS will work closely with other local partners to improve the outcomes and well-being of children and young people.
 - The DCS is responsible for the performance of local authority functions relating to the education and social care of children and young people.
 - The DCS should have regard to the General Principles of the United Nations Convention on the Rights of the Child (UNCRC) and ensure that children and young people are involved in the development and delivery of local services.

A BRIGHT FUTURE 2021-2026

A vision to make sure that Plymouth children and young people have the best possible start to life

Everyone who works with children and young people wants to make sure they have a Bright Future. We are ambitious for all children to live full and happy lives, receiving good quality health services, attending high quality education, and having fun while staying safe.

Our aim is that all Plymouth children and young people will have the opportunity to reach their full potential regardless of their

circumstances or childhood experiences. We also want to reduce any negative impact Covid-19 might have on your future.

We are making changes to the way we work together to support you. We will be clear about what we are doing and how it makes a difference to your lives. We want your voices to be at the heart of what we do so we can ensure that you grow up **healthy and happy, safe and able to aspire and achieve.**

TO STAY HEALTHY AND HAPPY

We will make sure you receive the right support to help you and your friends with your mental health and wellbeing.

We will work to make improvements to help you live healthy and active lives.

TO BE SAFE

We want Plymouth to be a place where children and young people feel safe and protected from the risks of being harmed at home and in communities.

You will be protected from all forms of exploitation

We will provide you with support from people that best suit your needs for as long as you need.

TO ASPIRE AND ACHIEVE

We will prepare you for all stages of education through nursery, primary and secondary school to give you the skills needed for the world of employment.

We are planning to increase opportunities for children and young people with special, educational needs and disabilities within Plymouth.

If you want to know more about **A Bright Future** email participation.youth@plymouth.gov.uk



A Bright Future 2021 - 2026



The partnership approach is driven by the following principles

- We are strength based
- We support the reductions of the impact of disadvantage
- We are restorative and reflective

There is a Strategic System Board supported by Partnership Board for each of the priority areas

- Aspire and Achieve – The Plymouth Education Board
- To Be Safe – Plymouth Safeguarding Children Partnership
- The Healthy and Happy Partnership

Education, Participation & Skills



National Agenda/Drivers

- **School White Paper** - Opportunity for all: strong schools with great teachers for your child
- **SEND/AP Green Paper** - Right support, right place, right time
- **Skills/FE White Paper** – Skills for jobs: Lifelong learning for opportunity and growth
- **Raising demand** – the need for service review and new ways of working
- **Changing Education Landscape** – academisation drive

Education, Participation & Skills Plymouth Local Focus



System

- Strengthen school improvement partnership system

Outcomes

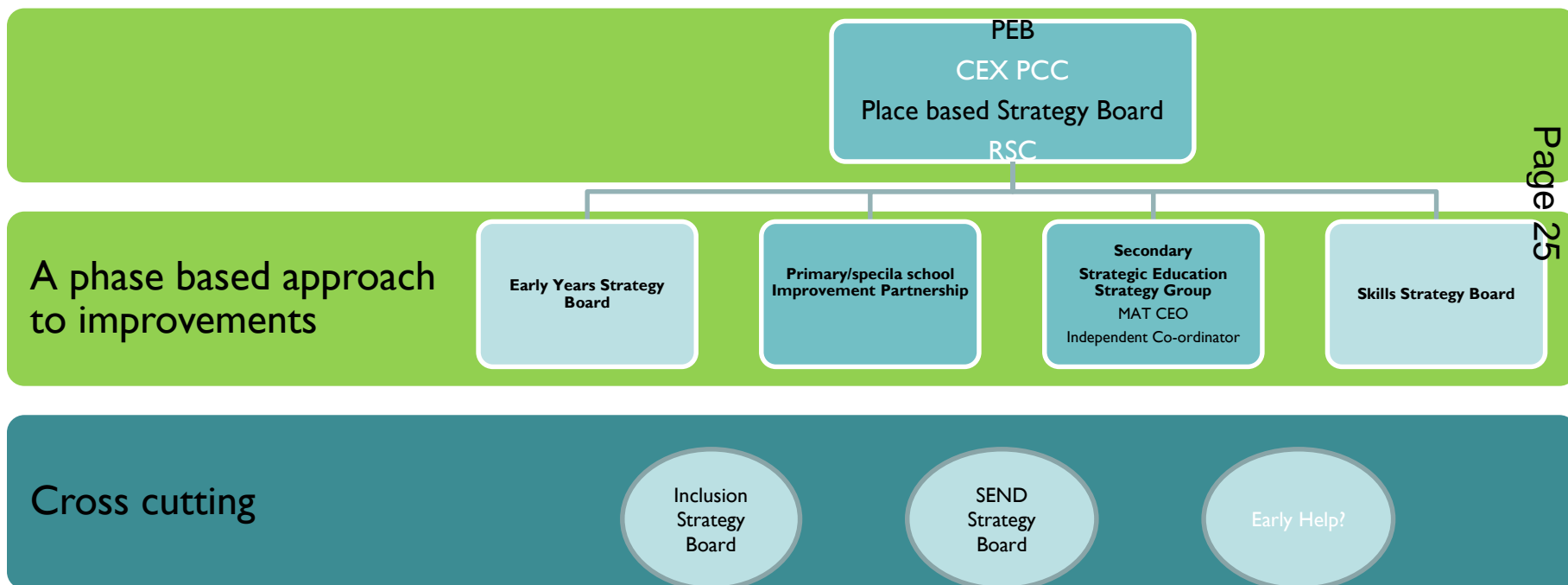
- Improve outcomes across all phase groups

Page 24

Inclusion

- Refocus on vulnerable learners

Plymouth Education Board and related partnership governance



The Role of New PEB



- The purpose of the new PEB is **to improve educational outcomes in all schools by bringing key parts of the school improvement system together to address issues**. Specifically, the Board will:
- determine the framework and the governance of the city's education improvement partnership, in the framework of A Bright Future;
- review the performance data and other outcomes based evidence relating to the progress of schools individually and collectively;
- set school improvement priorities for Plymouth as a whole;
- commission, broker and signpost school improvement support;
- encourage and sustain robust professional challenge and support between schools/MATs;
- communicate Plymouth's school improvement offer;
- use intelligence to advise and guide on the future system planning;
- ensure that no schools are left out;
- evaluate the impact of support;
- provide up to date information to the Sub-Regional School Improvement Board.

PEB's Phase Improvement Partnerships



Early Years

- to improve educational outcomes for children 0-5 years, and childcare 0-14 years, as well as contributing to overall cross-phase city-wide development planning to strengthen school improvement partnership system

Primary/Spec Schools

- to improve educational outcomes in primary and special schools specifically as well as contributing to overall cross-phase city-wide development planning

Secondary Schools

- to achieve strategic coherence - identifying collective priorities; required action across partners and co-ordinating activity to address. Provides robust peer to peer challenge and analysis

Skills & Post 16

- to lead interventions required to achieve the Skills 4 Plymouth Strategic Plan outcomes, closing skills gaps, growing a sustainable future talent pipeline and ensuring alignment with the Inclusive Growth agenda

Education, Participation and Skill Service Functions



**Service Director
(Education,
Participation and Skills)**

Head Of Service Access to Learning

- Place Planning
- System Performance
- Partnership Support
- Admissions
- SEND Transport
- PIAS

Head of Service SEND

- SEND Service Manager
- Educational Psychology Service
- 0 – 25 Statutory Assessment Team
- Early Years Inclusion
- Occupational Therapy
- Advisory Teaching and Support
- Children’s Disability Team
- Downham House Short Break Service

Head of Service Skills and Post 16

- Skills Programmes
- Employment and Skills delivery Plan
- Careers
- Adult and Community Learning
- Post 16 including EET

Head of Education, Virtual Schools and Inclusion

- Early Years commissioning
- School Standards
- School partnerships
- Safeguarding, Health and Well Being in Education
- Education (SEND) Improvement
- Virtual School for Looked After Children
- Inclusion, Attendance and Welfare

Education, Participation & Skills



Recent Achievement and Current Development

- Support for schools during Covid has been strong
- Foundation of Place-based & Phase Group Partnership
- KS4 Attainment Now Better than National Average
- More Secondary Schools Improved from RI to Good
- Higher % of EY Provision Graded Good or Outstanding (97%)
- Success in supporting residents' choice of schools
- Further Education and Skills Improved from RI to Good
- One Skills Plan for the City
- Inclusion Transformation for An Integrated Inclusion System
- School Causing Concerns System has Multi-Disciplinary Inputs

Children Young People and Families Service - National Agenda/Drivers (1)



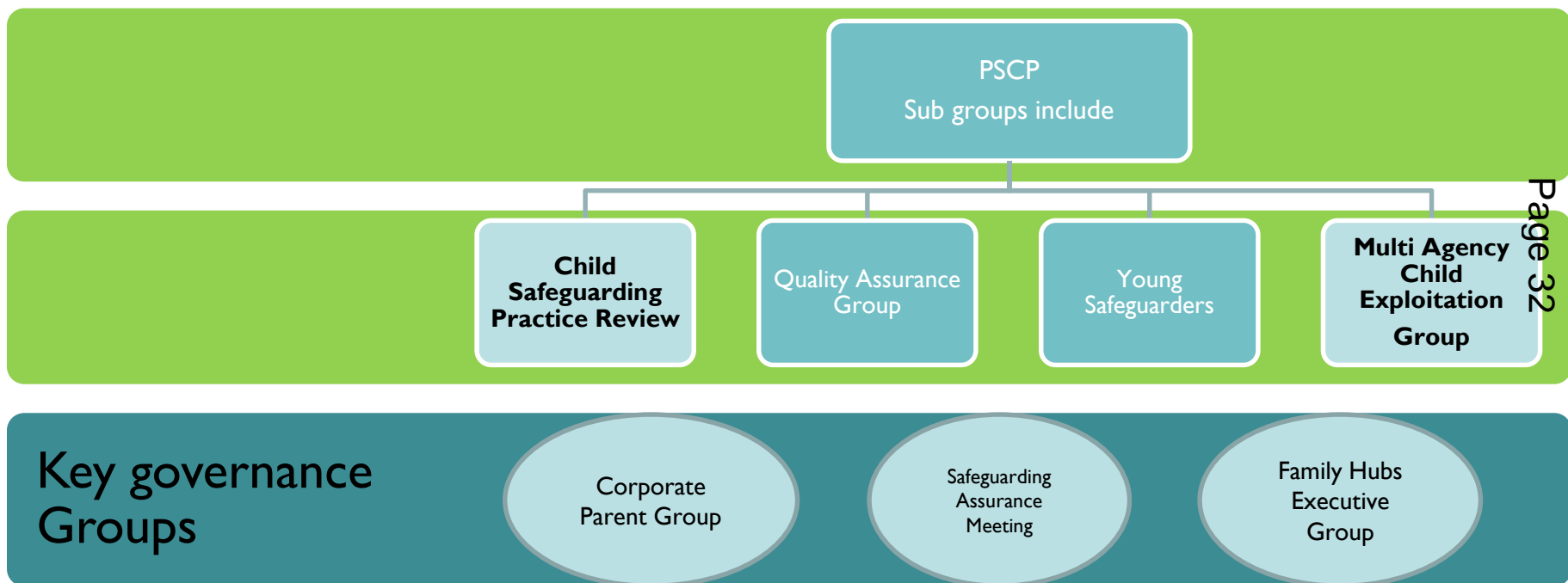
- **National Review into the murders of Arthur Labinjo-Hughes and Star Hobson:** published in late May 2022
 - 8 national recommendations, including:
 - Call for a new expert-led, multi agency model for child protection investigation, planning, investigation and review.
 - Establishing national multi agency practice standards for child protection.
 - Strengthening local safeguarding partners to ensure involvement of all
 - Changes to multi-agency inspection to understand local performance and drive improvements.
 - New role for the National Review panel.
 - Sharper performance focus and child protection policy in central government.
 - Using the potential of data to help professionals protect children.
 - Practice improvements in relation to domestic abuse.

National Drivers (2)



- **The Independent Review of Children’s Social Care** led by Josh MacAllister: published in late May 2022. Some key issues from the report, include:
 - A revolution in Family Help.
 - A ‘just and decisive’ child protection system.
 - Unlocking the potential of family networks.
 - Fixing the broken care market and giving children a voice.
 - Five ‘missions; for care experienced people.
 - Realising the potential of the workforce
 - A system that is relentlessly focused on children and families.

Plymouth Safeguarding Children's Partnership; Corporate Parenting and the Safeguarding Assurance Meeting



Plymouth Safeguarding Children's Partnership



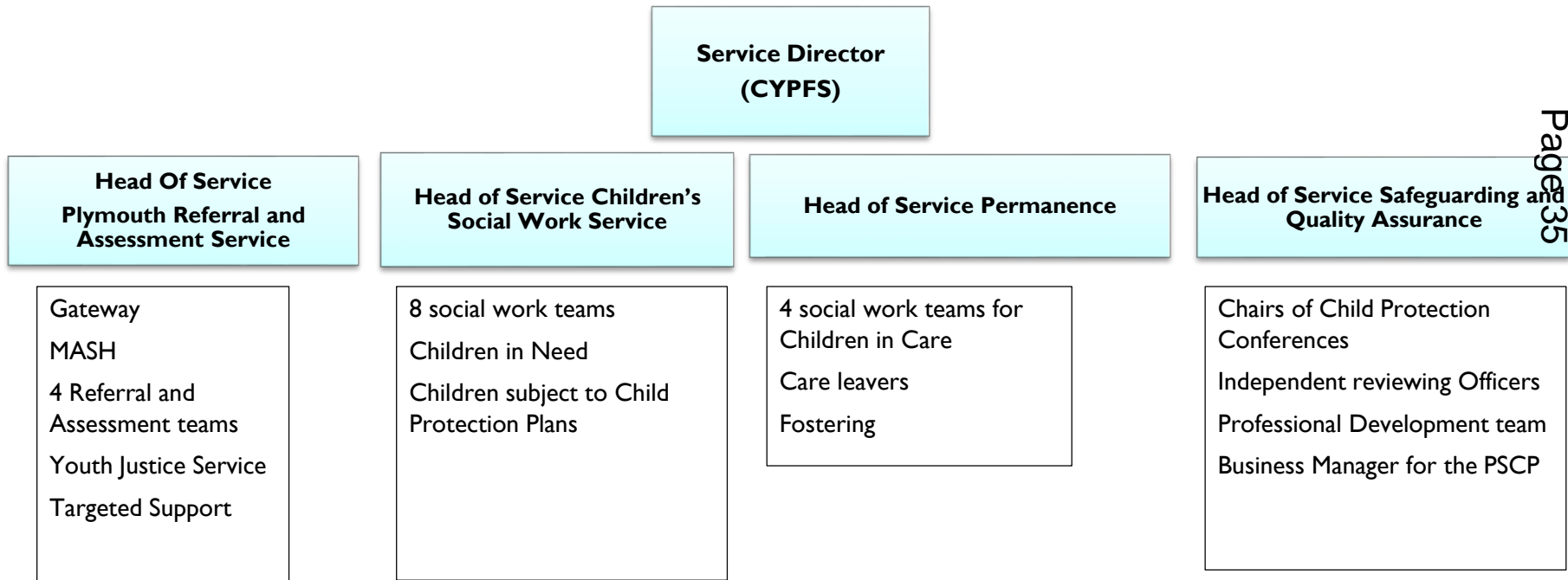
- Focus on SAFE – key priority in A Bright Future.
- Quarterly meetings reporting the Strategic Safeguarding Board
- Key subgroups:
 - Quality Assurance Group– to monitor and improve partnership performance and practice.
 - Child Safeguarding Review Group – managing all Child Safeguarding Practice Review activity and reporting to National Panel.
 - Workforce Development Group
 - Strategic MACE (missing and child exploitation) Group
 - Together For Childhood (10 partnership with NSPCC to prevent Child Sexual Abuse).
- Independent Scrutineer recently appointed to replace previous lead. This role offers critical friend challenge and independent oversight in respect of the quality of the partnership.
- Work to learn from National Review into the murders of Arthur Labinje-Hughes and Star Hobson will be driven in this partnership.

Corporate Parenting Group



- Governance arrangements for children in care and care experienced people.
- Quarterly meeting chaired by the Lead Member for Children.
- Attended by key elected members who champion corporate parenting on behalf of all elected members.
- Officers attend to report on key issues related to children in care and care experienced young people.
- Recent focus has included:
 - Care leavers (care experienced young people) and Mark Riddell's visit to Plymouth to review our offer and impact. We invited this visit from the DfE National Implementation lead for children in care and care leavers. A return visit is scheduled on 22nd June 2022.
 - Agreeing the Sky's the Limit Corporate Parenting Strategy
 - Agreeing the Local offer for Care experienced young people.
 - Developing a Whole Council approach to support care experienced young people.
 - Children and young people in care and their experience of the Covid-19 pandemic.

Children Young People and Families Service Functions



Children Young People and Families Service: Strengths and Areas for Development



- Response to challenges and crises, such as Keyham
- Youth Offending Service improvement/expansion and inspection outcome: GOOD
- Front Door Improvement Board impact on performance.
- Increase in social work capacity at all levels to meet demand issues
- Improving outcomes for care experienced young people
- PAUSE programme outcomes
- Adolescent Support Team outcomes (edge of care and reunification)
- Effective response to demand and capacity issues
- Recruitment and retention
- Reduction of repeat referrals and Child Protection plans
- Placement Sufficiency plan to further increase in-house fostering local residential and supportive accommodation options
- Embed the Adolescent Safety Framework in respect of extra-familial harm, such as exploitation.

Education and Children's Social Care Overview and Scrutiny Committee



Date of meeting:	15 June 2022
Title of Report:	Children's Services Provisional Finance Outturn Report 2021-22
Lead Member:	Councillor Mark Shayer
Lead Strategic Director:	Brendan Arnold (Service Director for Finance)
Author:	David Northey
Contact Email:	David.northey@plymouth.gov.uk
Your Reference:	DJN/Finance/2021.22
Key Decision:	No
Confidentiality:	Part I - Official

Purpose of Report

This report outlines the Provisional Outturn position of the Council for the year ending 31st March 2022.

Full details of the Provisional Outturn position for the Children's Directorate is set out in the body of the report.

Recommendations and Reasons

The Education and Children's Social Care Overview and Scrutiny Committee is recommended to note the Outturn position with regard to Children's.

Reason: as part of the committees responsibility for noting the financial performance of Children's Services.

Alternative options considered and rejected

None – our Financial Regulations require us to produce regular monitoring of our finance resources including a revenue and capital outturn position which culminates in the production of the 2021/22 annual statement of accounts.

Implications for the Medium Term Financial Plan and Resource Implications:

Robust and accurate financial monitoring underpins the Council's Medium Term Financial Plan (MTFP). The Council's MTFP is updated regularly based on on-going monitoring information, both on a local and national context. Any adverse variations from the annual budget will place pressure on the MTFP going forward and require additional savings to be generated in future years.

Financial Risks

Associated risk regarding the Directorate are managed within the monthly monitoring reports discussed at DMT and CMT meetings

Carbon Footprint (Environmental) Implications:

None identified.

Other Implications: e.g. Health and Safety, Risk Management, Child Poverty:

* When considering these proposals members have a responsibility to ensure they give due regard to the Council's duty to promote equality of opportunity, eliminate unlawful discrimination and promote good relations between people who share protected characteristics under the Equalities Act and those who do not.

None identified.

Appendices

*Add rows as required to box below

Ref.	Title of Appendix	Exemption Paragraph Number (if applicable) If some/all of the information is confidential, you must indicate why it is not for publication by virtue of Part 1 of Schedule 12A of the Local Government Act 1972 by ticking the relevant box.						
		1	2	3	4	5	6	7

Background papers:

*Add rows as required to box below

Please list all unpublished, background papers relevant to the decision in the table below. Background papers are unpublished works, relied on to a material extent in preparing the report, which disclose facts or matters on which the report or an important part of the work is based.

Title of any background paper(s)	Exemption Paragraph Number (if applicable) If some/all of the information is confidential, you must indicate why it is not for publication by virtue of Part 1 of Schedule 12A of the Local Government Act 1972 by ticking the relevant box.						
	1	2	3	4	5	6	7

Sign off:

Fin	djn.22 .23.34	Leg	Click here to enter text.	Mon Off	Click here to enter text.	HR	Click here to enter text.	Assets	Click here to enter text.	Strat Proc	Click here to enter text.
Originating Senior Leadership Team member: Brendan Arnold											
Please confirm the Strategic Director(s) has agreed the report? Yes											
Date agreed: 07/06/2022											
Cabinet Member approval: Councillor Mark Shayer											
Date approved: 07/06/2022											

Plymouth City Council

Finance Monitoring Children's Directorate – 2021/22

Provisional Outturn for year to 31 March 2022**End of Year Business as Usual (BAU) Revenue Outturn**

Directorate	Net Budget	Business as Usual Outturn	BAU Over / (Under) Spend
	£m	£m	£m
Children's Directorate	53.454	53.750	0.296

The Children's Directorate reported an adverse outturn position of £0.296m. This relates to the shortfall against the £4.001m savings target for the year. The saving related to school transport and saw additional demand in year; work continues to deliver the original saving in full

Covid Expenditure

Directorate	Covid Spend / Lost income	Main Spend Areas
	£m	
Children's Directorate	9.444	Additional Placement costs; additional social workers; increased legal costs associated with the extra demand and increased specialist assessments. There were also additional Adoption Transition Costs and some lost income within the schools service.

This page is intentionally left blank

Education and Children's Social Care Overview and Scrutiny Committee



Date of meeting:	15 June 2022
Title of Report:	Children's Services Scrutiny Performance Report (Q4 2021-22)
Lead Member:	Councillor Charlotte Carlyle
Lead Strategic Director:	Alison Botham (Director for Children's Services)
Author:	Paul Stephens
Contact Email:	paul.stephens@plymouth.gov.uk
Your Reference:	PSCSS-2021/22(Q4)
Key Decision:	No
Confidentiality:	Part I - Official

Purpose of Report

This is the Children's Services Scrutiny Performance Report for the end of quarter four (as at end of March 2022) and details how the Children's Service directorate is performing against its key performance indicators.

This report forms part of the Council's Delivery and Performance Framework and is a key part of our aim to achieve a 'golden thread' from the Corporate Plan and its KPIs and delivery plans, through to service and team level business plans, and ultimately to individual objectives.

Recommendations and Reasons

The Education and Children's Social Care Overview and Scrutiny Committee is recommended to: note the current position with regard to Children's Services Performance.

Reason: as part of the committees responsibility for monitoring the performance of Children's Services.

Alternative options considered and rejected

The Children's Services Scrutiny Performance Report is a key reporting document that provides transparency on the Council's performance and as such reporting this performance is considered best practice.

Relevance to the Corporate Plan and/or the Plymouth Plan

This report is fundamentally linked to delivering the priorities within the Council's Corporate Plan.

Implications for the Medium Term Financial Plan and Resource Implications:

The Medium Term Financial Strategy is a core component of the Council's strategic framework and has a vital role to play in translating the Council's ambition and priorities set out in the Corporate Plan 2021-25.

Financial Risks

Associated risk regarding performance are managed within the strategic and operational risk registers.

Carbon Footprint (Environmental) Implications:

None identified.

Other Implications: e.g. Health and Safety, Risk Management, Child Poverty:

* When considering these proposals members have a responsibility to ensure they give due regard to the Council's duty to promote equality of opportunity, eliminate unlawful discrimination and promote good relations between people who share protected characteristics under the Equalities Act and those who do not.

None identified.

Appendices

*Add rows as required to box below

Ref.	Title of Appendix	Exemption Paragraph Number (if applicable) <i>If some/all of the information is confidential, you must indicate why it is not for publication by virtue of Part 1 of Schedule 12A of the Local Government Act 1972 by ticking the relevant box.</i>						
		1	2	3	4	5	6	7
A	Children's Services Scrutiny Performance Report (Q4 2021-22)							

Background papers:

*Add rows as required to box below

Please list all unpublished, background papers relevant to the decision in the table below. Background papers are unpublished works, relied on to a material extent in preparing the report, which disclose facts or matters on which the report or an important part of the work is based.

Title of any background paper(s)	Exemption Paragraph Number (if applicable) <i>If some/all of the information is confidential, you must indicate why it is not for publication by virtue of Part 1 of Schedule 12A of the Local Government Act 1972 by ticking the relevant box.</i>						
	1	2	3	4	5	6	7

Sign off:

Fin	djn.22 .23.39	Leg	EJ/38 700	Mon Off	N/A	HR	N/A	Assets	N/A	Strat Proc	N/A
Originating Senior Leadership Team member: Jean Kelly											
Please confirm the Strategic Director(s) has agreed the report? Yes											
Date agreed: 06/06/2022											
Cabinet Member approval: Councillor Charlotte Carlyle											
Date approved: 06/06/2022											

Q4 2021/22 PERFORMANCE REPORT

Education and Children's Social Care Overview and Scrutiny
Committee



Contents

1.	Children Young People and Family Services	3
1.1.	Referrals & Re-referrals	3
1.2.	Children in Need	3
1.3.	Children subject to a Child Protection Plan	4
1.4.	Looked After Children (also referred to as Children in Care)	5
1.5.	Care Experienced	6
2.	Education, Participation and Skills	7
2.1.	Ofsted Outcomes	7
2.2.	Attendance	7
2.3.	Education, Employment and Training	8
2.4.	Key Stage 4 Outcomes	8

1. CHILDREN YOUNG PEOPLE AND FAMILY SERVICES

1.1. REFERRALS & RE-REFERRALS

1.1. REFERRALS & RE-REFERRALS				Previous Year & Benchmarking			Current Period
Ref	Indicator Name	2018/19 Actual	2019/20 Actual	2020/21 Actual	England	Statistical Neighbours	Q4 2021/22
1	Number of referrals received within the last 12 months	4,042	3,164	3,616	494.1 (2020/21)	608.5 (2020/21)	3,285
	Referrals received within the last 12 months - Rate per 10,000 children	769.1	598.1	678.5			616.4
2	Number of re-referrals within 12 months (last 12 months)	1,265	772	861	22.7% (2020/21)	23.3% (2020/21)	743
	% of re-referrals within 12 months (last 12 months)	31.3%	24.4%	23.8%			22.6%

In the 12 months to the end of quarter four, the Plymouth Referrals and Assessment Service (PRAS) received 3,285 referrals, this is 331 less than the 2020/21, but 121 more referrals than 2019/20. At a rate per 10,000 children (enabling comparisons against other authorities) we were reporting at 616.4 at the end of quarter four. This is lower than our published position for 2020/21 (678.5) but slightly higher than our statistical neighbours and higher than the England average of 494.1 (2020/21 published figure as 2021/22 published figures will not be released until December 2022). Whilst we remain above pre-pandemic levels, the last few months have seen decreases in the average monthly volume of referrals.

The proportion of re-referrals received (where we had received a referral for the same child in the 12 months prior) has seen an improvement. The end of quarter four position was reported at 22.6%, down 1.2 percentage points from our published 2020/21 figure. Our improvement combined with increased re-referrals in other authorities means we are at a level lower than our statistical neighbours and the England average.

1.2. CHILDREN IN NEED

1.2. CHILDREN IN NEED				Previous Year & Benchmarking			Current Period
Ref	Indicator Name	2018/19 Actual	2019/20 Actual	2020/21 Actual	England	Statistical Neighbours	Q4 2021/22
3	Number of children subject to a Child In Need Plan (snapshot)	1,053	841	1,121	-	-	965
	Children subject to a Child In Need Plan - Rate per 10,000 children	200.4	159.0	210.4	-	-	181.1

As the table above shows our 'Child in Need' caseload (which does not include children subject to Children Protection Plans or Looked after Children) had increased by 33.3% over 2020/21. Over the last few months our net number of children subject to a Child in Need Plan has started to return to pre-pandemic levels.

With the decrease in the number of children subject to a Child In Need Plan and some increased capacity in the Social Work teams, caseloads are gradually returning to more manageable levels. The service continues to review all children in need to ensure the right support at the right time for families.

1.3. CHILDREN SUBJECT TO A CHILD PROTECTION PLAN

1.3. CHILDREN SUBJECT TO A CHILD PROTECTION PLAN				Previous Year & Benchmarking			Current Period
Ref	Indicator Name	2018/19 Actual	2019/20 Actual	2020/21 Actual	England	Statistical Neighbours	Q4 2021/22
4	Number of children subject to a Child Protection Plan (Snapshot)	255	310	333	41.4 (2020/21)	57.2 (2020/21)	326
	Children subject to a Child Protection Plan - Rate per 10,000 children	48.5	58.6	62.5			61.2
5	Category of abuse for current Child Protection Plan: Neglect	45.1% (115)	53.2% (165)	50.2% (167)	-	-	51.5% (168)
	Category of abuse for current Child Protection Plan: Physical Abuse	11.0% (28)	8.7% (27)	7.8% (26)	-	-	7.7% (25)
	Category of abuse for current Child Protection Plan: Sexual Abuse	2.7% (7)	3.9% (12)	5.1% (17)	-	-	3.7% (12)
	Category of abuse for current Child Protection Plan: Emotional Abuse	41.2% (105)	34.2% (106)	36.9% (123)	-	-	37.1% (121)
6	% of children subject to multiple child protection plans - Within lifetime of the child (new plans starting in last 12 months)	22.7%	28.8%	27.4%	22.1% (2020/21)	21.3% (2020/21)	27.5%

At the end of quarter four (31 March 2022) there were 326 children who were subject to a Child Protection Plan. This is 61.2 children per 10,000 children and is slightly lower than the 2020/21 published figure and is 25 children (8.0%) more than at the point of the first national lockdown on 23 March 2020. At a rate per 10,000 children, we are 19.8 per 10,000 children higher than the England average and 4.0 children per 10,000 higher than our statistical neighbours.

When compared to the end of the 2020/21 position, the proportion of children on a Child Protection Plan due to 'Neglect' has increased by 1.3 percentage points to 51.5% of the 326 children subject to a CP Plan (as at 31 March 2022). The proportion of Child Protection Plans for 'Emotional Abuse' increased slightly (up 0.2 percentage points). CP Plans for 'Sexual Abuse' reduced by 1.4 percentage points and 'Physical Abuse' saw a slight decrease of 0.1 to 7.7%.

The proportion of children who became subject to a Child Protection Plan within the 12 months up to quarter four (i.e., the financial year 2021/22), who have been on a previous Child Protection Plan in their lifetime was reported at 27.5%. This has increased by 0.1 of a percentage point when compared to our published figure for the previous reporting year (2020/21) and is higher than our statistical neighbours and the England average. All local authorities experience repeat child protection planning processes for children. The Safeguarding Service has led a review of all of the children affected by this and are working with the wider service to improve practice and performance.

1.4. LOOKED AFTER CHILDREN (ALSO REFERRED TO AS CHILDREN IN CARE)

				Previous Year & Benchmarking			Current Period
Ref	Indicator Name	2018/19 Actual	2019/20 Actual	2020/21 Actual	England	Statistical Neighbours	Q4 2021/22
7	Number of children subject to a Care Plan - Looked After Children (Snapshot)	412	434	485	67.0 (2020/21)	92.2 (2020/21)	490
	Children subject to a Care Plan - Looked After Children - Rate per 10,000 children	78.0	82.0	91.0			91.9
8	% of Looked After Children placed outside of the city of Plymouth (i.e., the placement is not within PL1 to PL7 or PL9)	34.9%	34.9%	39.0%	-	-	38.0%
9	Placement Type: Family Placement (fostering or connected carers)	314	326	336	-	-	325
	Placement Type: Children's Homes	34	36	53	-	-	56
	Placement Type: Hostels & other Supportive accommodation	14	23	31	-	-	33
	Placement Type: Lodgings or Independent living (16+)	17	18	12	-	-	16
	Placement Type: Other Placement	2	3	0	-	-	0
	Placement Type: Placed for Adoption	17	12	25	-	-	24
	Placement Type: Placed with Parents	7	13	25	-	-	28
	Placement Type: Other accommodation - NHS, Family Centres, Mum & Baby	2	5	6	-	-	7
	Placement Type: Secure Units	3	0	2	-	-	1

On the 31 March 2022, there were 490 children/young people who are children in care. Although this is only five more children than the published figure for the end of 2020/21 position, it is 58 more than when the pandemic started, an increase of 13.4%. Unlike the level of children subject to a Child in Need Plan or Child Protection Plan, the increase seen in the net number of children in care is yet to return to pre-pandemic levels. A combination of increased social worker capacity (Permanence Service) and the work of the Adolescence Support Team is supporting reunification where possible and the prevention of children coming into care using earlier intervention and family support.

62% of children in care are placed within the city, the remaining 38% are placed outside of the city. This measure is simply based on the postcode of the child's placement address. Those not within PL1 to PL7 or PL9 are considered outside of the city. For example, PL12 refers to Saltash in Cornwall, which could potentially be less than a mile from a child's home address, but it is outside of Plymouth.

1.5. CARE EXPERIENCED

Ref	Indicator Name	2018/19 Actual	2019/20 Actual	Previous Year & Benchmarking			Current Period
				2020/21 Actual	England	Statistical Neighbours	Q4 2021/22
10	% of Care Experienced young people in Unsuitable Accommodation (Statutory Service (aged 18 to 20))	9.0 (DfE)	24.0% (DfE)	9.6% (local) 15.0% (DfE)	12.0%	11.5%	6.1%
	% of Care Experienced young people in Education, Employment and Training (Statutory Service (aged 18 to 20))	51.0% (DfE)	47.0% (DfE)	52.8% (local) 39.0% (DfE)	52.0%	51.3%	56.4%

Our local figures shows that both the proportion of Care Experienced young people in unsuitable accommodation and those in Education, Employment and Training at better levels than our statistical neighbours and the England average. We continue to improve our performance and practice in both key areas.

We are working closely with the Skills for Plymouth response to ensure all care experienced young people have the opportunity to engage in education, training and employment. The increase in Personal Advisors in the service is supporting this work and the plan to increase social worker capacity in the permanence service will support earlier preparation with all children in care.

2. EDUCATION, PARTICIPATION AND SKILLS

2.1. OFSTED OUTCOMES

Ref	Indicator Name	2016/17 Actual	2017/18 Actual	Previous Year & Benchmarking			Current Period
				2018/19 Actual	England	Statistical Neighbours	Q4 2021/22
1	% of pupils attending Plymouth schools judged by Ofsted as good or outstanding	80.1%	74.9%	68.0%	-	-	77.1%
2	% of all schools judged by Ofsted as good or outstanding	New	New	72.0%	86% (2018/19)	-	76.0%

Graded inspections resumed at the start of the 2021/22 academic year. There are 98 state-funded schools in the city and, at the end of quarter four, 77.1% of pupils are attending a school judged as good or outstanding.

55 out of 69 Primary schools (79.7%) have been graded good or outstanding by Ofsted and 11 out of 18 Secondary schools (61.1%) have been grade as good or outstanding. This is an improvement on the last available report for the 2018/19 academic year when Ofsted judged that 72% of our schools were good or outstanding. Nationally, 86% were judged good our outstanding in 2018/19.

2.2. ATTENDANCE

Ref	Indicator Name	2018/19 Actual	2019/20 Actual	Previous Year & Benchmarking			Current Period
				2020/21 Actual	England	Statistical Neighbours	Q4 2021/22
3	% of all pupils attending School	N/A	N/A	73.0%	88.6% (end Q4)	-	86.4%
4	% of pupils with a social worker attending School	N/A	N/A	69.4%	82% (end Q4)	-	70.1%
5	% of pupils with Special educational Needs and Disabilities attending School	N/A	N/A	65.9%	83% (end Q4)	-	77.7%

The information above is from the "Attendance in education settings during the COVID-19 pandemic" national survey. The survey was introduced at speed to obtain attendance data in response to the pandemic and replaced the school absence reporting pre-Covid. This survey is now requested fortnightly and is not mandatory, therefore the information should be used taking these caveats into account.

38.5% or 37 Plymouth school responded to the survey at the end of quarter four, with 86.4% of pupils being in attendance (versus pupils on roll). Plymouth's response rate was lower than the 43% of schools that responded nationally and the overall attendance level reported for Plymouth was 2.2 percentage points lower than the national average of 88.6%. For our vulnerable pupils Plymouth below nationally reported figures – however this will be impacted by the low response rates seen from Plymouth's secondary schools (just seven secondary schools responded).

It is worth noting that during lockdown two and three Plymouth had consistently higher attendance rates than was nationally reported.

2.3. EDUCATION, EMPLOYMENT AND TRAINING

2.3. EDUCATION, EMPLOYMENT AND TRAINING				Previous Year & Benchmarking			Current Period
Ref	Indicator Name	2018/19 Actual	2019/20 Actual	2020/21 Actual	England	Statistical Neighbours	Q4 2021/22
6	% of 16 and 17 year olds in Education, Employment and Training	89.3%	93.6%	90.7%	93.6% (end Q3)	-	91.4%
7	% of 16 and 17 year olds with SEND in Education, Employment and Training	83.5%	86.5%	84.3%	86.5% (end Q3)	-	82.9%

At the end of quarter four the proportion of 16 and 17 year olds in Education, Employment, and/or Training (EET) is 91.4%. This is above the EET figures at the end of quarter four in 2020/21 (90.7%).

At the end of quarter four 82.9% of young people with Special Educational Needs and/or Disabilities are in education, training and/or employment. This is 1.4 percentage points below the EET figures reported at the end of quarter four of 2020/21 (84.3%).

2.4. KEY STAGE 4 OUTCOMES

2.4. KEY STAGE 4 OUTCOMES				Previous Year & Benchmarking			Current Period
Ref	Indicator Name	2017/18 Actual	2018/19 Actual	2019/20 Actual	England	Statistical Neighbours	2020/21 Actual
8	Key Stage 4 - % of pupils achieving 5+ in English and Maths	38.5%	37.6%	47.1%	48.4% (2020/21)	50.7% (2020/21)	51.9%
9	Key Stage 4 - Average Attainment 8 score	44.1 points	43.7 points	48.5 points	48.9 points (2020/21)	50.0 points (2020/21)	50.5 Points

Due to the COVID-19 pandemic all summer 2021 exams were cancelled. This data reflects the GCSE grades awarded to pupils in August 2021, through centre (school based) assessed grades.

The percentage of pupils achieving the 'basics', a 5+ in English and Maths now sits above the national and statistical neighbour average (although slightly below the regional average). This is a good reflection on the Secondary Improvement Strategic Partnership activity that has been undertaken.

Education and Children's Social Care Overview and Scrutiny Committee



Date of meeting:	15 June 2022
Title of Report:	Kickstart Scheme Update
Lead Member:	Councillor Charlotte Carlyle
Lead Strategic Director:	Alison Botham (Director for Childrens Services)
Author:	Tina Brinkworth
Contact Email:	Tina.brinkworth@plymouth.gov.uk
Your Reference:	Click here to enter text.
Key Decision:	No
Confidentiality:	Part I - Official

Purpose of Report

To update the Education and Children's Social Care Scrutiny Committee on the Kickstart Scheme prior to an assessment of the impact in December 2022, when the programme has concluded

Recommendations and Reasons

1. *For the Committee to note the update*

Led by Department of Work and Pensions (DWP) as part of the Government's Plan for Jobs, the Kickstart Scheme is a £2 billion fund to create thousands of high quality work placements for young people. The programme ran until March 2022, with final placement concluding September 2022.

Alternative options considered and rejected

N/A

Relevance to the Corporate Plan and/or the Plymouth Plan

Vision: An outstanding skill system, which drives high aspirations and attainment and meets the needs of employers and individuals across all ages and communities.

Implications for the Medium Term Financial Plan and Resource Implications:

N/A

Financial Risks

N/A

Carbon Footprint (Environmental) Implications:

N/A

Other Implications: e.g. Health and Safety, Risk Management, Child Poverty:

* When considering these proposals members have a responsibility to ensure they give due regard to the Council's duty to promote equality of opportunity, eliminate unlawful discrimination and promote good relations between people who share protected characteristics under the Equalities Act and those who do not.

[Click here to enter text.](#)

Appendices

*Add rows as required to box below

Ref.	Title of Appendix	Exemption Paragraph Number (if applicable) <i>If some/all of the information is confidential, you must indicate why it is not for publication by virtue of Part 1 of Schedule 12A of the Local Government Act 1972 by ticking the relevant box.</i>						
		1	2	3	4	5	6	7
A	Briefing report title							
B	Equalities Impact Assessment (if applicable)							

Background papers:

*Add rows as required to box below

Please list all unpublished, background papers relevant to the decision in the table below. Background papers are unpublished works, relied on to a material extent in preparing the report, which disclose facts or matters on which the report or an important part of the work is based.

Title of any background paper(s)	Exemption Paragraph Number (if applicable) <i>If some/all of the information is confidential, you must indicate why it is not for publication by virtue of Part 1 of Schedule 12A of the Local Government Act 1972 by ticking the relevant box.</i>						
	1	2	3	4	5	6	7

Sign off:

Fin	djn.2 2.23. 34	Leg	EJ/38 661/2 5.05.2 2	Mon Off	Click here to enter text.	HR	Click here to enter text.	Assets	Click here to enter text.	Strat Proc	Click here to enter text.
-----	-------------------------------	-----	-------------------------------	------------	---	----	---	--------	---	------------	---

Originating Senior Leadership Team member: Ming Zhang

Please confirm the Strategic Director(s) has agreed the report? Yes

Date agreed: 25/05/2022

Cabinet Member approval: *approved by Cllr Carlyle verbally*

Date approved: 26/05/2022

The £2 billion has been allocated to fund employers to create 6-month job placements for 16 to 24 year olds at risk of long-term unemployment and young people are paid 25 hours by the Government at minimum wage, numbers are unlimited numbers within budget. Employers from all industries and across the private, public and voluntary sectors have been encouraged to get involved, providing the placements do not replace existing or planned vacancies, or cause existing employees or contractors to lose or reduce their employment.

Each application needed to include how you will help the participants to develop their skills and experience, including support:

1. To look for long-term work, including career advice and setting goals.
2. With CV and interview preparations.
3. For the participant with basic skills, such as attendance, timekeeping and teamwork.

Employers received funding to cover:

- 100% of the relevant National Minimum Wage for 25 hours a week.
- Associated employer National Insurance contributions.
- Employer minimum auto-enrolment pension contributions.

On confirmation of the job start, employers received a payment of £1,500 per placement to support overhead costs, this can be used for things like:

- Setup costs
- Support
- Training
- Onboarding

Due to a delay in mobilising the programme it was extended to March 2021.

In Plymouth there have been 2 key gateway organisations and between them they have supported over 400 young people into placements. While it is still too early to assess the impact of this initiative we are currently seeing approx. 60% of these young people transitioning into full time employment.

Skills Launchpad Plymouth has also supported hundreds of young people and these two initiatives, along with job growth opportunities has resulted in a continued decline in 16 to 24 year-old Universal Credit Claimants. In year we have seen a 20% fall from March 2021 to March 2022 period (approx. 4,900 to 3,900 respectively), resulting in the reduction of 1,000 young people as they have transitioned into work.

We will be able to complete a final assessment on the impact of Kickstarter in December 2022, when the programme has concluded.

This page is intentionally left blank

Education and Children's Social Care Overview and Scrutiny Committee



Date of meeting:	15 June 2022
Title of Report:	City Wide Youth Service Provision
Lead Member:	Councillor Charlotte Carlyle
Lead Strategic Director:	Alison Botham (Director for Childrens Services)
Author:	Dave Ryland, Community Connections Strategic Manager Martine Aquilina, Acting Head of Service Youth Justice and Targeted Support Service
Contact Email:	Martine.aquilina@plymouth.gov.uk Dave.Ryland@plymouth.gov.uk
Your Reference:	062022/Youth Service Provision
Key Decision:	No
Confidentiality:	Part I - Official

Purpose of Report

Provision of information about city-wide youth work offer. The paper describes the range of youth work provision delivered by PCC and commissioned services, and gives examples of partnership projects with NSPCC and Barnardos which involve an element of youth work provision.

Recommendations and Reasons

This paper is for information only.

Introduction

Youth work is a specialist discipline with a specific skill base. Professional and non- professionally qualified youth workers work with young people, using a defined methodology, skill set and value base. Work can be 1:1, with groups of young people or involve intervention within a community setting. Youth work aims to support young people to achieve positive outcomes and to improve life chances, with a particular focus on participation and advocacy. The youth worker's role is to support, encourage and enable young people to raise aspirations and make positive choices.

There is a wide and diverse youth work offer across Plymouth, with many community groups offering an element of youth work. Plymouth City Council's Youth Work offer is delivered via

- Children Young People and Families Service, where the youth workers are mostly professionally qualified
- Community Connections
- Commissioned services

Children, Young People and Families Service – Targeted Support Service provision**1. Intervention Team**

The Intervention Team works alongside Children's Social Workers providing interventions. The team has 4 Professional Youth Workers who provide specialist youth work interventions.

Youth Homelessness: Two Youth Workers in Targeted Support are dedicated to work with young people who present as homeless in the city. These Youth Workers work closely with our housing colleagues and The Zone who provide advocacy. Their work involves getting alongside the young person and making all attempts to support them to identify a safe place to live, whether this be back with family where possible or with friends. Where this is not an option then they will support the young person to be assessed jointly with colleagues from Community Connections and the Zone to identify what accommodation would be most suitable and safe and will continue to support once the young person is housed. This may include emotional, financial and practical support for example, helping to set up benefit entitlement, budgeting work and practical support to ensure the young person can live independently.

Targeted Intervention: Two youth workers receive bespoke pieces of work that would have been identified through a social work assessment and plan. This work would be undertaken on a 1-1 basis and could include providing space for the young person to explore feelings of anger, self-esteem and confidence, managing anxiety, sexual health and healthy relationships. This work can be complex and relies on successfully building relationships and trust.

2. Adolescent Support Team

The Adolescent Support Team is made up of Social Workers, Family Support Workers and Professional Youth Workers. The team work intensively with young people aged between 10 and 17 using the Trauma Recovery Model as the basis of their practice. The Adolescent Support Team work restoratively with young people and their parents where the relationship has broken down or is at risk of breaking down. The Youth Workers will support the Social Workers and / or Family Support Workers providing 1-1 specific interventions including healthy relationships, understanding exploitation, keep safe work for example with the aim of improving the relationship between them and their caregivers.

3. Family Intervention Project

The Family Intervention Project work with families using the whole family approach. This work is intensive and the team can be involved with the family for up to a year. The team have a specific Youth Support Worker who is available to provide specific bespoke pieces of intervention to adolescents within the family.

4. Early Help Advice and Support Team

The Early Help, Advice and Support Team have 5 Youth Workers who work with young people who don't require a statutory intervention, using a range of tools to understand the young person's experiences and assess risk (for example, DUST, STORM). Youth Workers will support young people 1-1 and in groups. They are trained to deliver Take 3 parenting programmes. The workers will work with young people on all aspects of their lives from healthy relationships and online safety to raising aspirations and self-esteem to improving independent living skills. They regularly work with young people who are isolated and are not engaging in society to improve mental health and encourage engagement with services that can support.

The Youth Workers in the Early Help Advice and Support Team have now resumed the running of 2 Group Work programmes, the first covering online safety and exploitation and the second an educational programme that covers a managing anxiety and anger, transitions, healthy relationships, self-esteem and aspirations. These are rolling programmes that will be delivered throughout the year.

As we move forward, it is hoped that partners will be able to support with co-delivery so that we can provide a much fuller programme.

5. Reducing Exploitation and Absence from Care and Home (REACH)

The REACH team have recently moved to the Youth Justice Service and are in the process of growing in structure from 3.5 Professional Youth Workers to 5 Youth Workers and 3 Support Workers (including a Practice Manager qualified as a Professional Youth Worker)

The team work with all young people who are reported missing to complete the Return Home Interview and provide specific interventions to reduce further missing episodes. The team work to build a relationship so that they can get alongside the young person to enable them to understand the reasons why they are going missing and to identify the level of risk associated with this.

As the team grows work will include supporting parents to understand the risk of exploitation and what they can do to support their children. The team work closely with the social work teams and youth justice service to identify risk and develop appropriate plans to reduce this.

6. Participation Team

The Participation Team aims to put young people at the heart of practice by engaging them within a framework of participation, consultation and involvement, enabling their voices and experiences to shape and improve service delivery. By doing this the team also aims to support their personal development and understanding of their own personal journeys.

The Participation Team facilitates a number of groups including:-

- Three Listen and Care Councils that work exclusively with looked after or care experienced young people. These groups are involved in co-design of system improvement and also feed their views directly to councillors and the Corporate Parenting Group.
- Young Safeguarders who support the work of Plymouth Safeguarding Children Partnership to make sure that the voices of young people are heard and that the policies and procedures that affect their lives are fair and easily understood. They are also involved in quality assurance work on behalf of the partnership.
- UK Youth Parliament and Plymouth Youth Cabinet are democratically elected young people who campaign and represent young people across Plymouth both locally and nationally on issues that affect their lives.
- Young Recruiters, Trainers and Advisors are trained young people who are involved in staff recruitment and produce training materials to support staff development.

Community Connections Youth Service

Community Connections youth workers guide and support young people in their personal, social and educational development to help them reach their full potential. They set, organise and run community programs aimed at young people aged between 8 and 25. The aim is to help young people explore and understand their ideas, values and beliefs, building their confidence and life skills so that they can make a successful transition to adulthood. Youth workers work in a variety of settings, delivering focused work to engage with high-risk young people, for example, targeted interventions/outreach activities and work with partners. Youth work relies on voluntary engagement by young people and the building of relationships based on trust in order to support and empower them. Whilst some of this activity is based

on the streets of Plymouth, some core service delivery is offered from assets managed by Community Connections. These centers are Southway, Honicknowle, Efford and Estover Youth and Community Centre.

Recovery from COVID-19 Position

In response to COVID-19 Community Connections Youth service responded dynamically to the needs of young people in the city. The service built and understanding into the needs of existing service users whilst also creating a gateway for vulnerable young people who were hidden more than ever, by tailoring service offerings in line with Government and The National Youth Agency advice.

We have now transitioned back away from virtual sessions into physical attendance programme delivery.

The below details both the current provisions and work in motion to develop service offerings by Community Connections Youth Service.

Detached Youth Work

The Detached Team are focused on developing the wider offer within the city through the deployment of team members into locations where risk taking and/or anti-social behaviour is believed to be taking place. They also work to address thematic or seasonal issues such as knife crime, tombstoning, criminal exploitation. The team then work with young people identified and signpost them into other services, engage with them in appropriate settings, give support, advice and guidance. The team also work in partnership with other city providers ensuring where possible gaps in provision are addressed, behavioural issues are escalated where appropriate and funding bids are submitted where appropriate.

Plymouth Pathfinder Project

Plymouth Pathfinder is a 2-year pilot programme, funded until November 2022. The programme seeks to maximise the benefits that physical activity can bring to a cohort of children and young people in Plymouth, in particular:

- those who have experienced childhood trauma
- or (and) who have special educational needs

The aims include helping children and young people to reach their potential, to develop coping strategies and tools to support them into adulthood and to support the next generation of families.

We are now working in and with all 3 of selected school/community systems:

- Marine Academy Plymouth
- Sir John Hunt Community Sports College
- Stoke Damerel Community College

Young Carers Project

Venue/s: Honicknowle (Efford)

Plymouth Young Carers Project is a part of Time 4 U - Plymouth's young carer offer to children and young people. The Young Carers Group is a citywide project providing 5 youth sessions per week for all young carers aged from 8 years up to 19 years of age. The overall aim the project is to give young carers a break, meet up with other carers, and have opportunities to engage in positive fun activities and to feel supported.

The Out Youth Group (OYG)

Venue/s: Central location – Fredrick Street

OutYouth is a youth group designed specifically for young people ranging in age 11 – 25 years of age who identify as Lesbian, Gay, Bisexual and Trans. Open weekly there are two back to back groups depending on age. Young people are able to meet with their friends, make new friends and socialise in a comfortable,

inclusive space with the freedom to identify without judgment or discrimination. Staffed by qualified youth workers and volunteers young people have opportunity to seek information and advice, and support as required. We provide a rotation of activities for example art, craft, board games, cookery, sports and opportunities for young people to influence and participate in wider projects and consultations. Two recent focus pieces of work have looked at the use of Pronouns and Interpretations, Loneliness and Isolation.

For Me & My Friends (4MMF)

Venue/s: Efford Youth Centre

4 Me & My Friends, is a youth group aimed primarily at young people with young people on the Autistic spectrum, aged 10 to 25 years of age. The group also work with young people with Global delay syndrome, Sensory processing disorder, Asperger's, ADHD, OCD, Generalised anxiety disorder, Attachment disorder and Swan (syndrome without a name). The project offers young people the opportunity to have fun, have a voice, learn new skills and make new friends.

Project Name: Young Parents Community Café

Venue/s: Southway Youth Centre

This group is a tailored to the individual and the group's needs; we also welcome expecting mothers and fathers to the group. The group is designed specifically for young parents under 25 years of age and offers a space to feel valued and positive about becoming parents. We offer a safe, non-judgemental space, in our Youth and Community Centre in Southway.

Argyle Community Trust PL Kicks Partnership

Venue/s: Specific areas – Honicknowle; Efford; (aiming to reach; Southway, Barne Barton / St Budeaux, Keyham)

Working in partnership with Argyle Community Trust. The Kicks project (see [here](#)) is about cutting crime and anti-social behaviour in the various areas it's delivered in. Predominantly composing of football sessions, all participants are able to come and access further qualifications, courses and accreditation.

Open Access Sessions

Venue/s: Specific areas – Honicknowle; Efford; Southway;

Open access youth work is provision that a young person may access regardless of their background, needs or position in society. Open access youth work is based on voluntary participation, with young people being free to come and go as they please (for further insight see - [here](#)). Offering a regular, safe, warm space to socialise with friends and a space where young people can and do build positive relationship with youth workers and others relevant agencies and practitioners. Open Access Youth sessions are arguably the 'bread and butter' of youth work

Animation and Gaming Sweet! – In Development

Aims – To engage young people in a creative medium to engage, learn, create and showcase issues / projects / themes that are relevant to them. Consulting and working with small groups to explore / create relevant animations; engaging young people in a creative medium; exploring creative techniques where young people can creatively express their voice; create a dynamic on line presence; supporting the visibility of creative youth work; creating on line 'how too's; working towards creative on line competitions based on relevant themes; exploring opportunities in the creative sector.

Funding

Respite Innovation Fund - Secured

Community Connections have supported a bid into the Respite Innovation Fund. The application centres on empowerment, sustainability and improved outcomes. This is achieved through multiple platforms such as a youth work programme equating to £156,174 which community connections will work with

partners to deliver if successful. Other deliverables include a residential offering, education programme, NHS SaT and Psych, and a parenting support programme.

Plymouth Pathfinder – Active Devon - Secured

Through active involvement with the Plymouth Pathfinder Project and youth workers engagement with the pilot schools, it has been identified that there is a need to support young people affected by the Keyham Tragedy outside of school term. Through consultation the detached youth team we have secured £10,000 which will be used to increase positive activities and projects for young people in the Keyham area of the summer of 2022.

Cllr Community Grant - Secured

£4,000 has been awarded to the Detached Team to support the transition and engagement of young people with The Shed in Keyham, as a Youth & Community venue.

Keyham Sparks Fund- Secured

The Detached Team were successful in their SPARKS bid (up to £3000) to take young people from the Keyham Area to London later in the year as part of the Voices Participation Group.

Safer Streets 3 - Secured

The CYT secured £20,000 from SS 3, specifically to invest in equipment and resources to increase their creative digital offer to young people. This will increase the team's capacity in exploring digital creative technology and media, whilst enriching the universal offer through the development of a gaming suite. The core objective being to enhance the opportunities of engaging young people in their contemporary digital realms and increase opportunities to raising awareness of online safety and creative opportunities, whilst also acting as an informal method of engagement to support the prevention of VAWG – creating a safe space, to engage and explore contemporary issues.

Safer Streets 4 – Application made awaiting outcome

To employ a targeted youth work team who will focus on engaging with young people and relevant partners in the city centre and waterfront. The aim would be to have a team of youth workers that are consistently and regularly in the area to be able to build relationships with young people, this would enable the opportunity for engagement to work with young people on the streets and support and divert young people from ASB related behaviour. The team would also have capacity to follow up work in groups/121 to ensure that there is positive and ongoing level of engagement and support for the young people. The team would have the ability to have regular detached sessions as well as scope for intensive and targeted responses when needed

Fit and Fed - Young Carers Summer Funding - Secured

Awarded £6,756 to deliver Summer Activities for the Young Carers Group

Youth Investment Fund – Application in Process

This is a £368 million investment in young people to improve access to Universal facilities. This is very early days for the funding and an initial meeting has taken place with Community Connections and Children's Services to see where we can work together to apply for funds. Applications can range between £300k and £8.7m. If successful this will enable a review and investment into the current Youth Centre facilities and explore options in regards to the placement of a new youth centre within an area of high need, low service. (Information Attached)

Commissioned Services

The Zone - Progeny Contract

Contract Value: £317,988.30 (7 years with a further 1 year extension to allow for review of service offer and identification of sustainable funding)

Contract Length: 1st Sept 2016 - 31st Aug 23 (7 years)

Description of the Service: Progeny aims to facilitate the development of a whole school approach to positive emotional health and wellbeing culture across special and secondary school communities. This service includes supporting schools to carry out an annual audit, creating bespoke annual delivery plans

for each school and the delivering the subsequent training required by staff, delivery of activities in mental health weeks in October and May to pupils, Mental Health First Aid Training for staff, Peer Listener training for pupils and group parent/carer workshops.

Devon Mind - Wellbeing for Education Recovery Contract

Total Contract Value: £10,000 (4 months)

Contract Length: 1st Dec 21 – 31st Mar 22 (4 months – time limited DfE project)

Description of the Service: The Wellbeing for Education Recovery project followed on from the Wellbeing for Education Return project (delivered by The Zone). The overall purpose of the project is to build on support for schools and colleges in recognising and responding appropriately to children and young people who may present with a range of mental health and well-being issues impacted by the pandemic.

Kooth Digital Health Ltd (formerly known as Xenzone) – Emotional Health & Wellbeing in Schools

Contract Value: £1,796,541 (6 years with a further 7 month extension to allow alignment of contracts across Devon for CCG procurement timeline)

Contract Length: 1st Sept 2016 - 31st Mar 23 (6 years and 7 months)

Description of the Service: The EHWPB in Schools Service provides face to face (sub-contracted to Young Devon) and online counselling (Kooth) and talking therapies for young people aged 11-18 including psychoeducational groups, moderated online forums and access to safe online resources to secondary schools in Plymouth.

The Plymouth Alliance – The Zone

Contract value: The current annual core contract value of the Alliance is £7.3 million of which the Zone receive around £175k.

Contract length: Initially for 5 years until 2024, however this may be extended until 2029.

The Plymouth Alliance deliver a whole system response for people who are aged 16+ and who have support needs in relation to homelessness and/or substance misuse and who may also have support needs around mental health, offending or leaving care. The Plymouth Alliance has seven members; Bournemouth Churches Housing Association (BCHA), Harbour Centre, Hamoaze House, Shekinah, The Zone, Livewell Southwest and Plymouth Access to Housing (PATH).

A key element of the contract is to provide accommodation and support services to people aged 16+, regardless of legal status. The offer specifically for young people includes supported accommodation, floating support services and supported lodgings. Historically these services had been commissioned separately to services for adults, but the rationale for joining these to the Alliance was to reduce duplication, provide equity of access to accommodation for 16/17 year olds irrespective of status and to use the total financial envelope flexibly to best meet need.

The Zone provide a front of house drop in service where young people can access a range of support services including accommodation advice. The ZAP project, commissioned as part of the Plymouth Alliance, provides the early intervention, prevention and homeless floating support element of the housing pathway for young people aged 16-25. This includes delivering intervention work such as mediation at the initial point of crisis to prevent homelessness, homelessness prevention support through ongoing casework and tenancy sustainment.

Alternative options considered and rejected

Not applicable

Relevance to the Corporate Plan and/or the Plymouth Plan

Sign off:

Fin	djn.2 2.23. 38	Leg	EJ/3 8700 /2	Mon Off	Click here to enter text.	HR	Click here to enter text.	Asset s	Click here to enter text.	Strat Proc	Click here to enter text.
Originating Senior Leadership Team member: Jean Kelly											
Please confirm the Strategic Director(s) has agreed the report? Alison Botham, Director of Children's Services, Yes Date agreed: 06/06/2022											
Cabinet Member approval: Councillor Charlotte Carlyle, approved by email. Date approved: 06/06/2022											

This page is intentionally left blank

Education and Children's Social Care Overview and Scrutiny Committee

DRAFT Work Programme 2022-2023



Please note that the work programme is a 'live' document and subject to change at short notice. The information in this work programme is intended to be of strategic relevance.

For general enquiries relating to the Council's Scrutiny function, including this Committee's work programme, please contact Jake Metcalfe, Democratic Advisor on 01752 304963.

Date of meeting	Agenda item	Prioritisation Score	Reason for consideration	Responsible Cabinet Member / Officer
15 June 2022	Finance Outturn Children's and Education Scorecard Overview of Services Update on Kickstart Youth Service Update			
14 September 2022	Josh MacAlister's Independent Review of Childrens Social Care Plymouth Safeguarding Partnership			
23 November 2022	White Paper with MATS			

Date of meeting	Agenda item	Prioritisation Score	Reason for consideration	Responsible Cabinet Member / Officer
15 February 2023				
Items to be scheduled				
Review report – Adopt South West				
Regional Schools Commissioner				
Changes to pupil premium				
Finance Monitoring				
Sufficiency Strategy for Placements				
Unregulated placements				
Out of Hours Reshaping				
Education Improvements				
Plymouth Education Board and Work programme				
Update on Elective Home Education				
Experienced Social Worker recruitment and retention				
Afghan Resettlement Programme				
Care Leavers and Barnardo’s Care Journeys				
School Attainment (Annual Report)				
Children’s Mental Health Select Committee update				
Update on Kickstart (first scrutiny of municipal year)				
Plymouth Safeguarding Board				
Update on arrangements for children missing education				
Armed Forces Covenant				
Update on Baroness Baron’s letter				
To be scheduled				
Joint Select Committee Reviews				